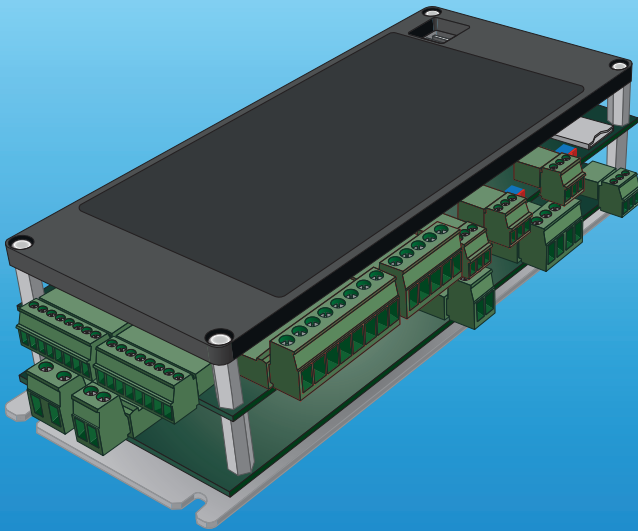


Thor E2



hardware manual for Thor E2 and Thor Es-48V

Technical data

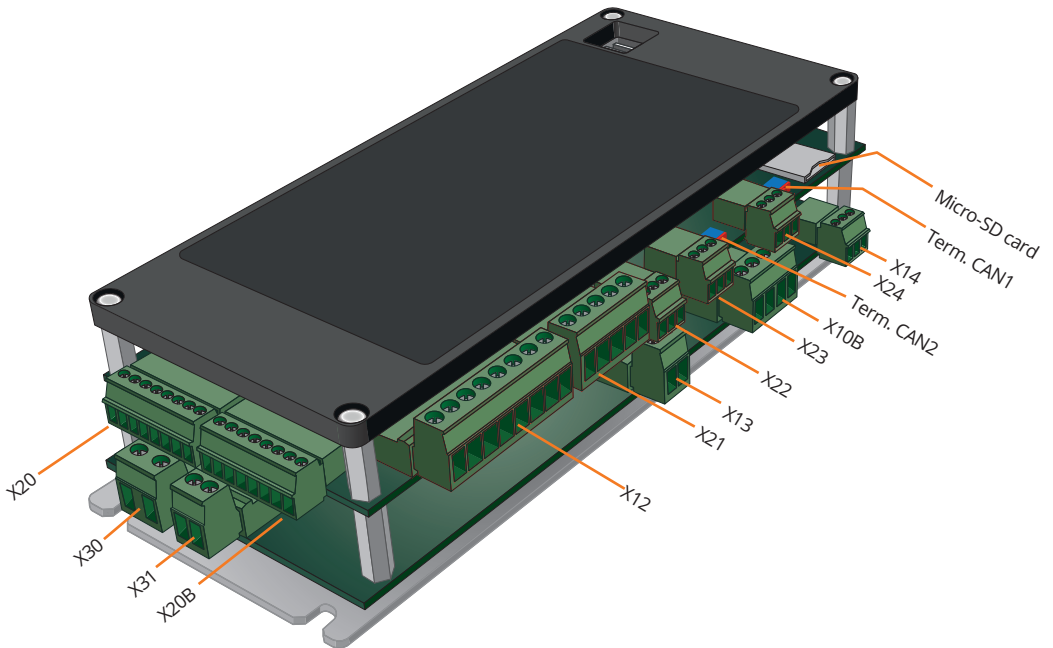
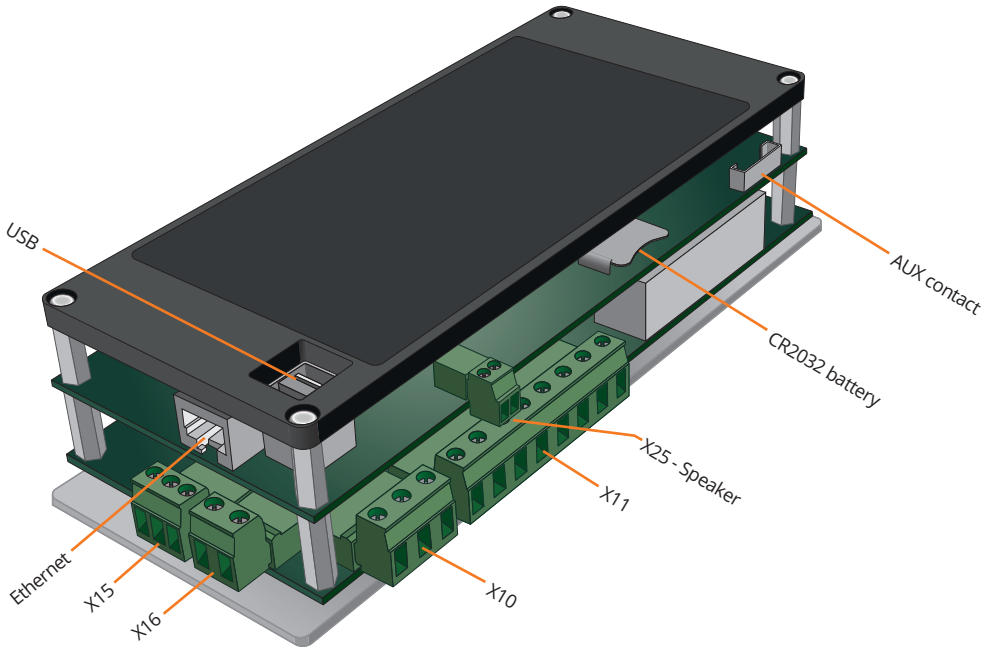
Power Consumption:	Idle: 2,5 W; Max: 4,5 W
Interface:	Ethernet, Micro SD, 2 x USB Host, 1 x RS485 (DCP)
Battery:	CR2032, Lithium 3V
Display interface:	5 Inch LCD, 24 bit colour, 960 x 480 resolution, Capacitive Multi- touch glass
Inputs:	24 V: 24 x 24 V inputs (I1, I2, I4). Thereof 2 x 24 V inputs with constant 30 mA current for contactor/brake monitoring. Thor E2: 2 x 230 VAC for car light and powersupply. Thor E2-48V: 2 x 48V for car light and powersupply.
Outputs:	24 V: 16 x high side (O1, O2) 500 mA short circuit protected general purpose 230 VAC: 5 x 5 A, 230 VAC, relay output.
Speaker output:	2 x 2 W
Safety Circuit Input:	Thor E2: 6 x 230 VAC for safety circuits. Thor E2-48V: 6 x 48V for safety circuits.
Article number:	Thor E2: 1000001 Thor E2-48V: 1000002

Please note: The version **Thor E2-48V** is only used for projects with 48V safety circuits and is not equipped with safety relays for door bridging.

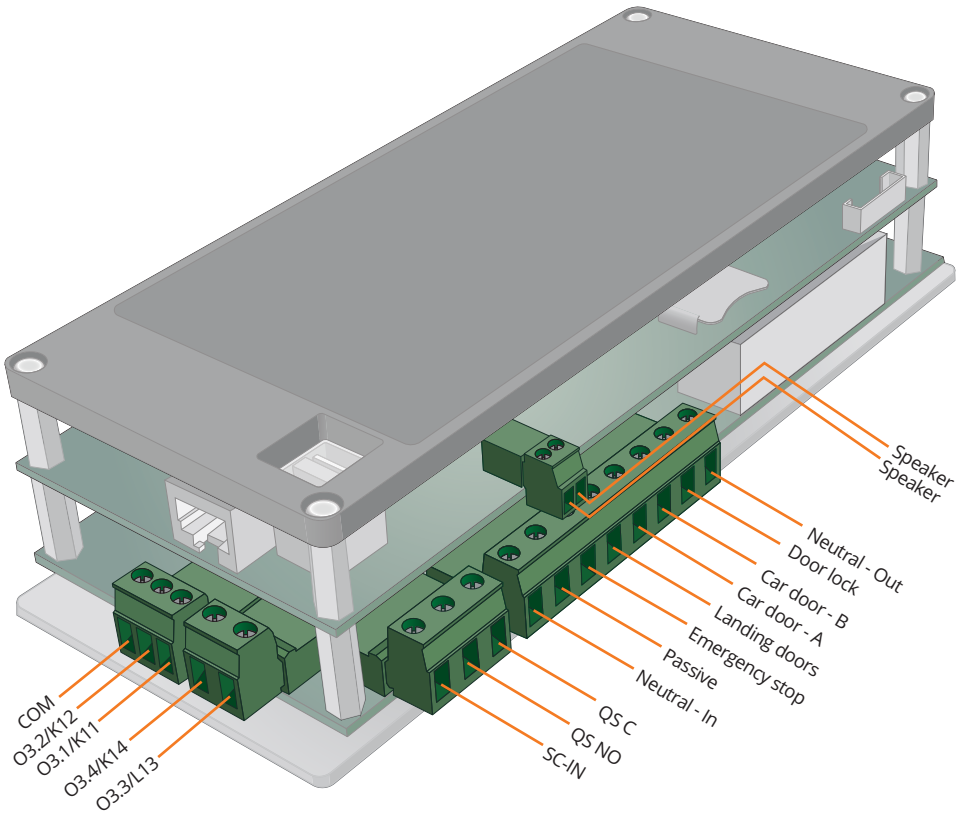
Table of content

Technical data	2
Overview	4
Connections	5
Connections top board	6
Connections bottom board	7
Connections top board	8
Certificate	11
General information	12
Safety information	12
Incident and issue reporting procedure	13
Incident report flow chart	14
Safely updating the device firmware	15

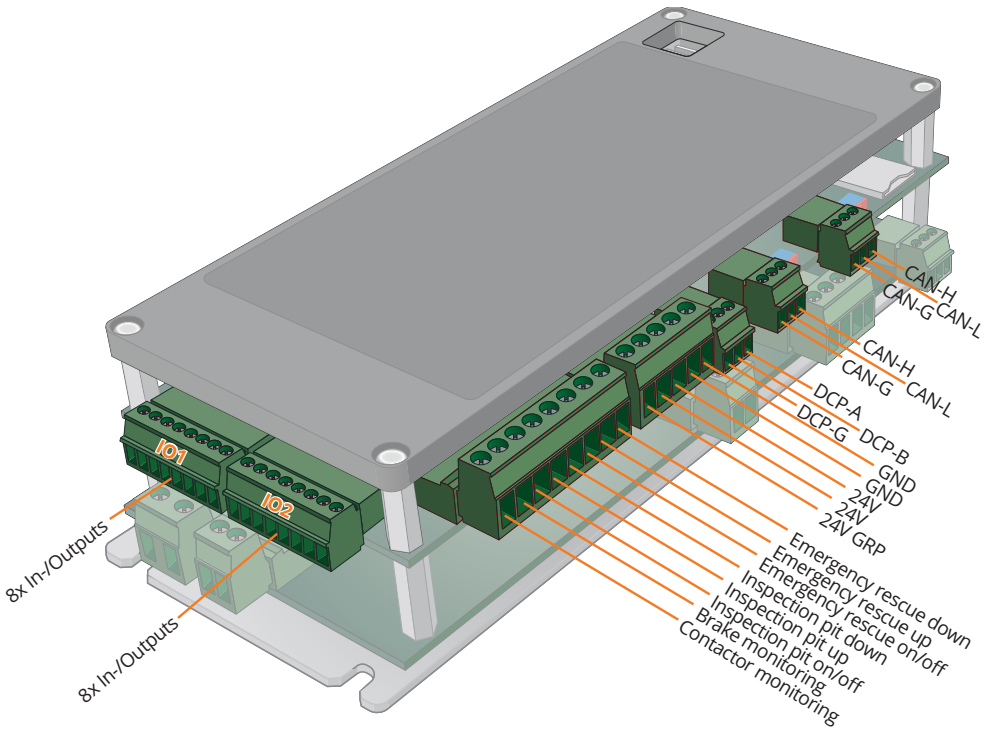
Overview



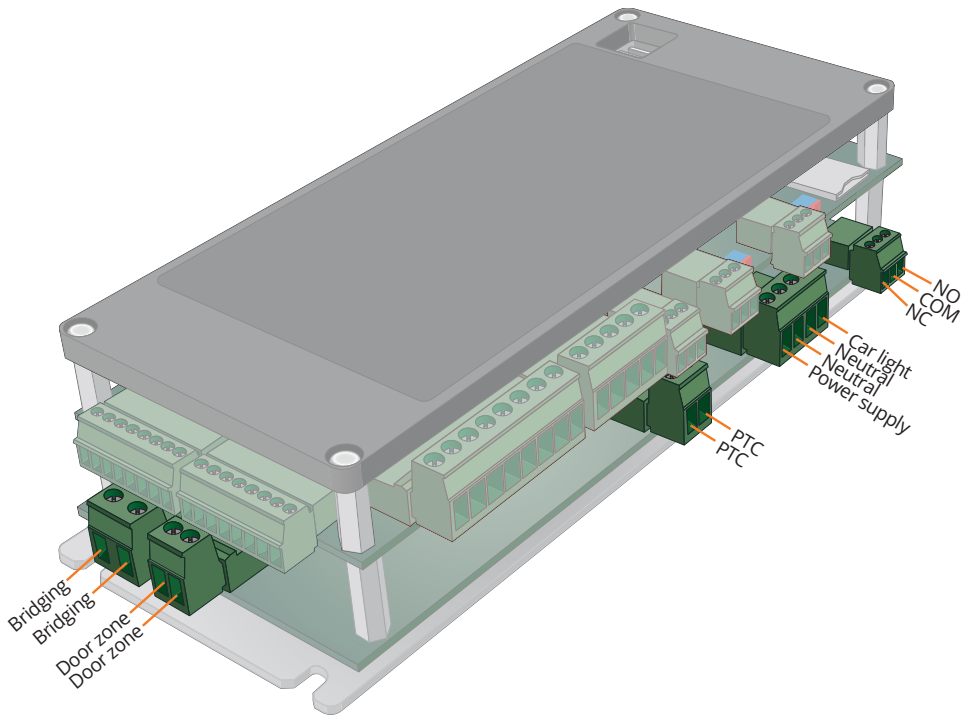
Connections



Connections top board



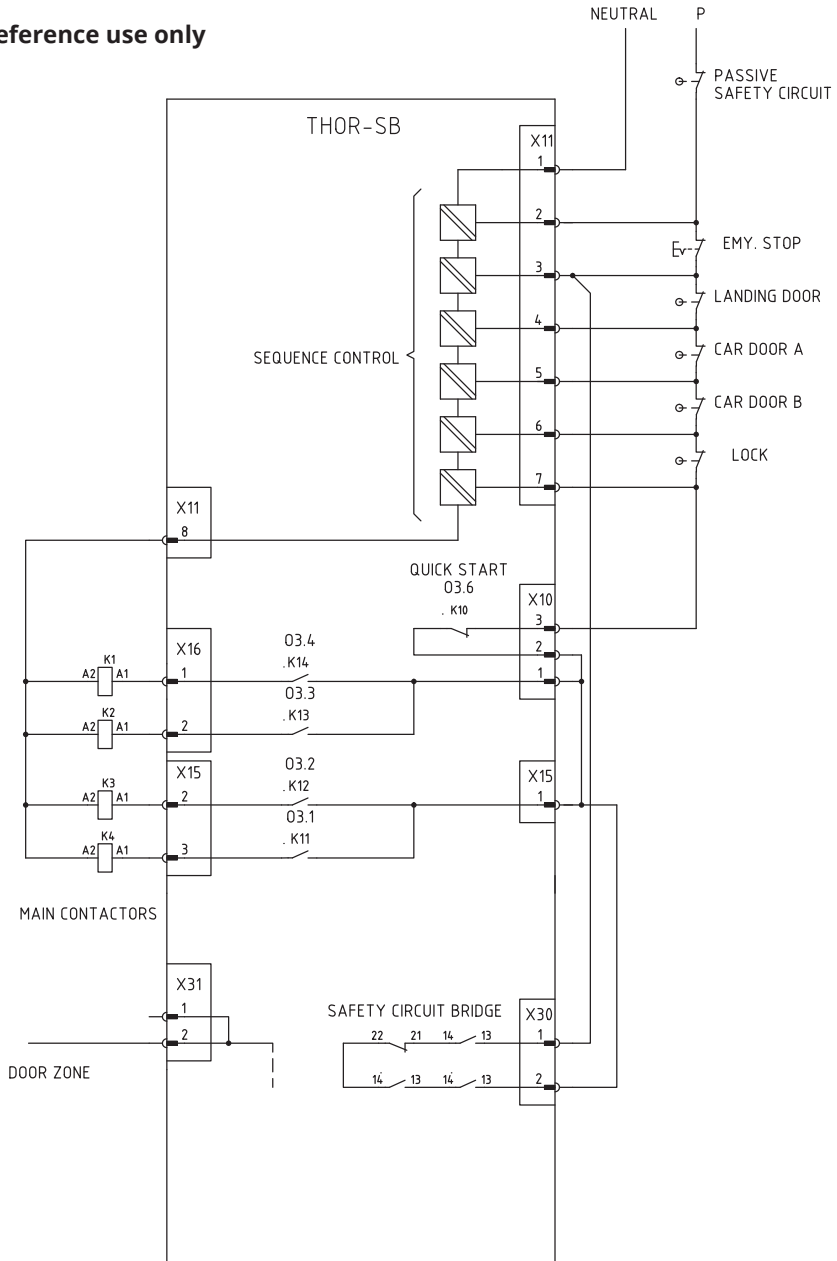
Connections bottom board



Note: Thor E2-48V is not equipped with bridging and door zone.

Connections top board

For reference use only

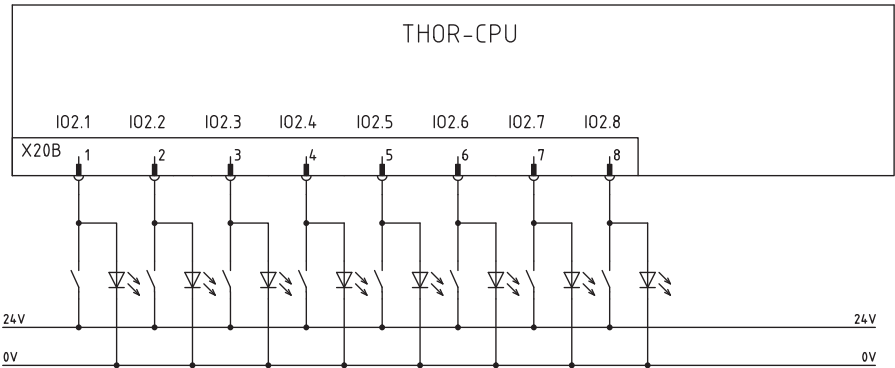
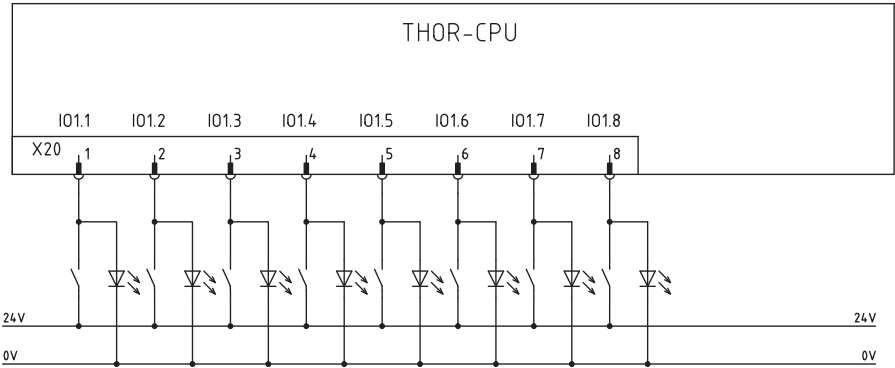
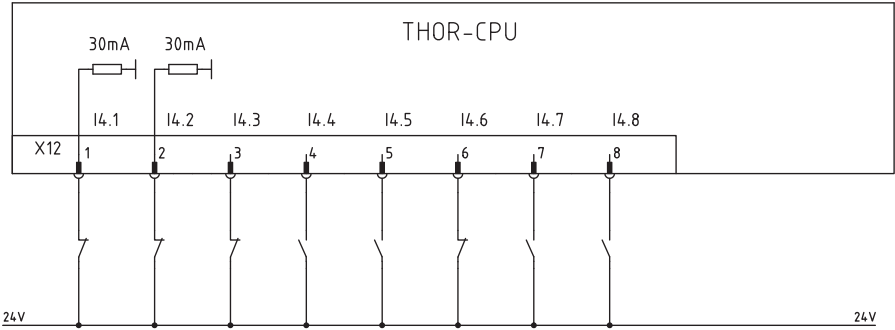


Note: Thor E2-48V is not equipped with bridging and door zone.

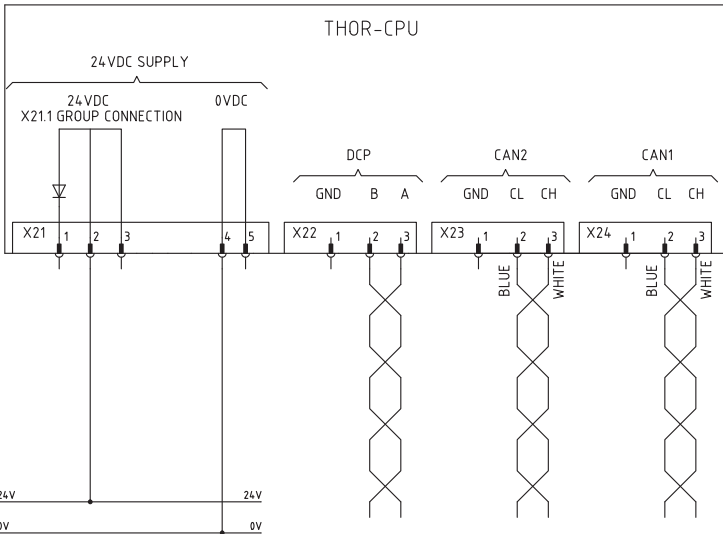
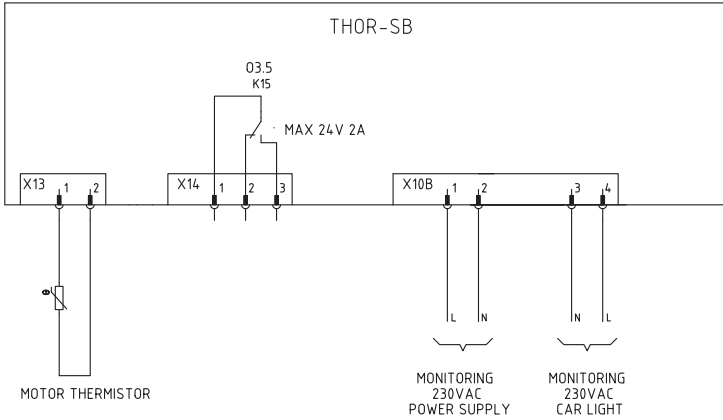
For reference use only

RECOMMENDED USE

- | | | |
|---------------------------|---------------------|---------------|
| I4.1 CONTACTOR MONITORING | I4.4 INSP. PIT UP | I4.7 ERO UP |
| I4.2 BRAKE MONITORING | I4.5 INSP. PIT DOWN | I4.8 ERO DOWN |
| I4.3 INSP. PIT ON/OFF | I4.6 ERO ON/OFF | |



For reference use only





liftinstituut
SINCE 1933



EU-TYPE EXAMINATION CERTIFICATE

Issued by Liftinstituut B.V.
identification number Notified Body 0400,
commissioned by Decision no. 2023-0000172941

Certificate no. : NL23-400-1002-700-01 Revision no.: 1

Description of the product : Lift control unit for electric or hydraulic lifts with monitoring circuit for safety chain, door bridging circuit, detection of uncontrolled movement of the car (UCMP) and brake monitoring (ACOP/UCMP)

Trademark : Solidlift Holding AB

Type no. : THOR E

Name and address of the manufacturer : Hiselektronik Sweden AB
Antennvägen 10
SE135 48, Tyresö, Sweden

Name and address of the certificate holder : Solidlift Holding AB
Antennvägen 10
SE135 48, Tyresö, Sweden

Certificate issued on the following requirements : Lifts Directive 2014/33/EU

Certificate based on the following standard : EN 81-20:2020, clause 5.6.6.2, 5.6.7.3, 5.6.6.7, 5.6.7.9, 5.11.1, 5.11.2.1.2 and 5.11.2.3
EN 81-50:2020, clause 5.8 and 5.15

Test laboratory : None

Date and number of the laboratory report : None

Date of EU-type examination : December 2024 – March 2025

Additional document with this certificate : Report belonging to the EU-type examination certificate no.: NL23-400-1002-700-01 rev. 1

Additional remarks : Key parameters for detecting UCM:
Detection distance: installed door-zone (variable)
Max. response time THOR E : 10ms
Speed and distance travelled : to be calculated

Conclusion : The safety component meets the requirements of the Lifts Directive 2014/33/EU considering any additional remarks mentioned above

Certification decision by

P.J. Schaareman
Product Manager C&S

Amsterdam

Date : 27-03-2025
Valid until : 09-02-2028

General information

Decommissioning

Before disposing of the device, it should be reset to factory settings to ensure that any sensitive or identifiable information is removed. Personal data is generally not stored on the unit, so additional erasure is typically not required. Once reset, the unit must be disposed of properly in accordance with local regulations.

If the device was equipped with a USB device for data backup or voice announcement messages, the USB device must be securely erased (formatted) before disposal. It should then be discarded in compliance with the Electronic Waste Ordinance. For secure data destruction, the DIN 66399 standard (Office and Data Technology – Destruction of Data Carriers) should be followed.

Packaging and disposal

The display is covered with protective foil and other materials to safeguard it during transport.

- » Keep all packaging materials away from children.
- » This device must not be disposed of with household waste.
- » When decommissioning, the display and its components should be taken to a designated electronic waste collection point for proper recycling, in accordance with the Electronic Waste Ordinance.
- » Packaging materials should be recycled at an appropriate recycling center.

Before recycling the unit, consider whether the display or its components can be reused or resold. Selling the unit via classified ads or online marketplaces may be an option. Reuse is always preferable to recycling.

Safety information

Liability

Thor Parts AB or any of its collaboration partners is not liable with respect to the buyer of this product or to any third parties for damage, loss, costs or work incurred as a result of accidents, misuse of the product, incorrect installation or illegal changes, repairs or additions. Claims under warranty are likewise excluded in such cases. Thor Parts AB accepts no liability arising from printing errors, mistakes or changes.

Safety Precautions!

- » Only trained professionals, that are authorised to work on the equipment, should install, configure and use this product.
- » This product is intended for the elevator industry. It has been designed and manufactured to be used for its specified purpose only. It must not be used for any other purpose without the producer's consent.
- » The product cannot be modified or altered in any way and should only be installed and configured strictly following the procedures described in this manual.
- » All applicable health and safety requirements and equipment standards must be considered and strictly adhered to, when installing and configuring this product.
- » After installing and configuring this product, the operation of the equipment should be fully tested to ensure correct operation, before the equipment is returned to normal use.

Incident and issue reporting procedure

In the event of an incident, it is crucial that Thor Parts AB follows a structured procedure for responding. Bug reports, errors, security concerns, issues, and incident reports can be submitted to us via the incident report form on our website.

Submitted reports must be clear, complete, and concise. The form includes several required fields, such as:

- The name of the person submitting the report
- The identification number of the unit/controller
- A valid email address
- Sufficient information to verify and assess the incident

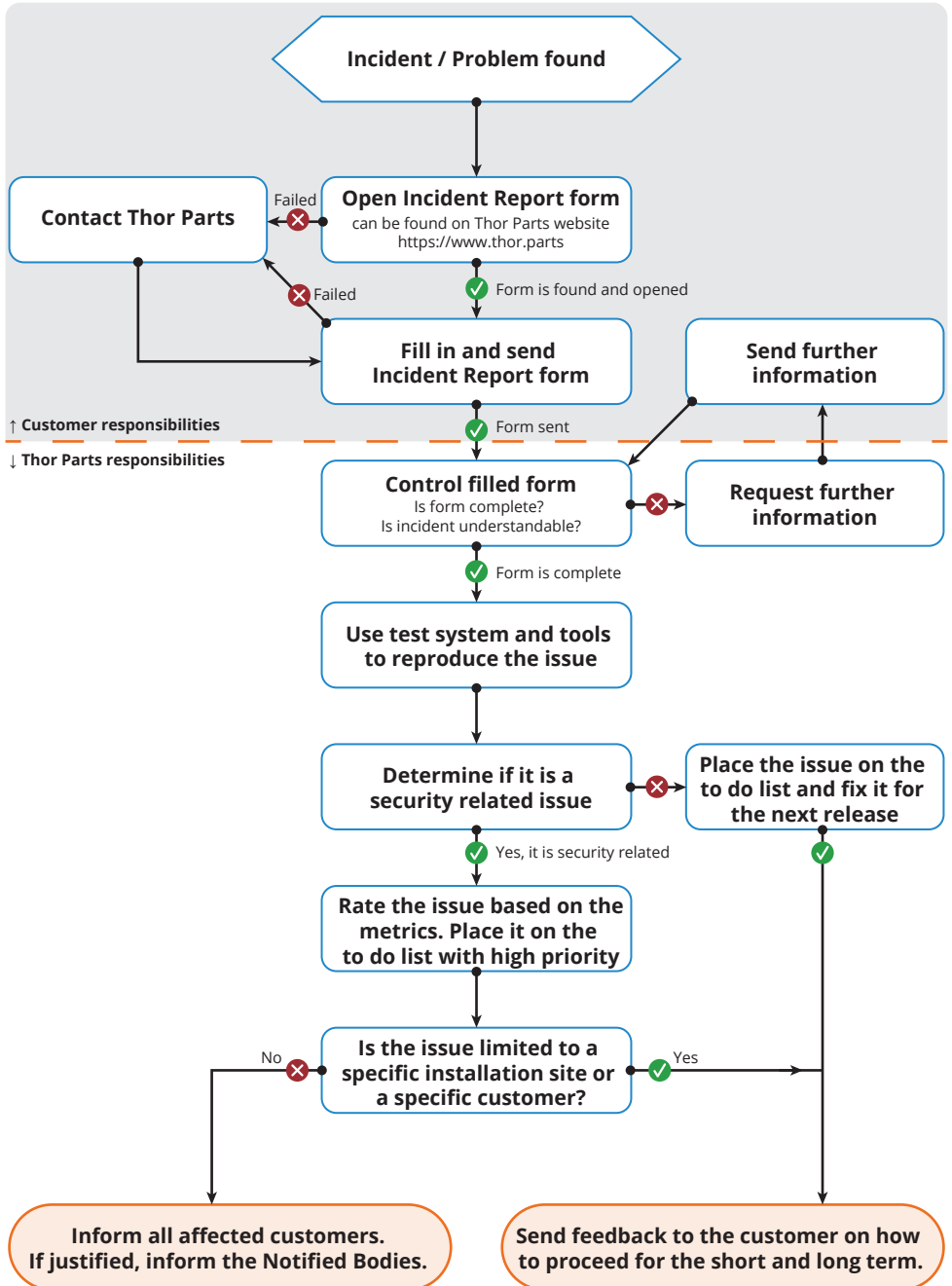
Please ensure that the incident is described in detail, including steps to reproduce the issue if applicable.

The incident report serves as documentation for any event that has caused or could potentially cause a functional or security issue with the product. It captures what has happened and typically includes the steps required to replicate the issue.

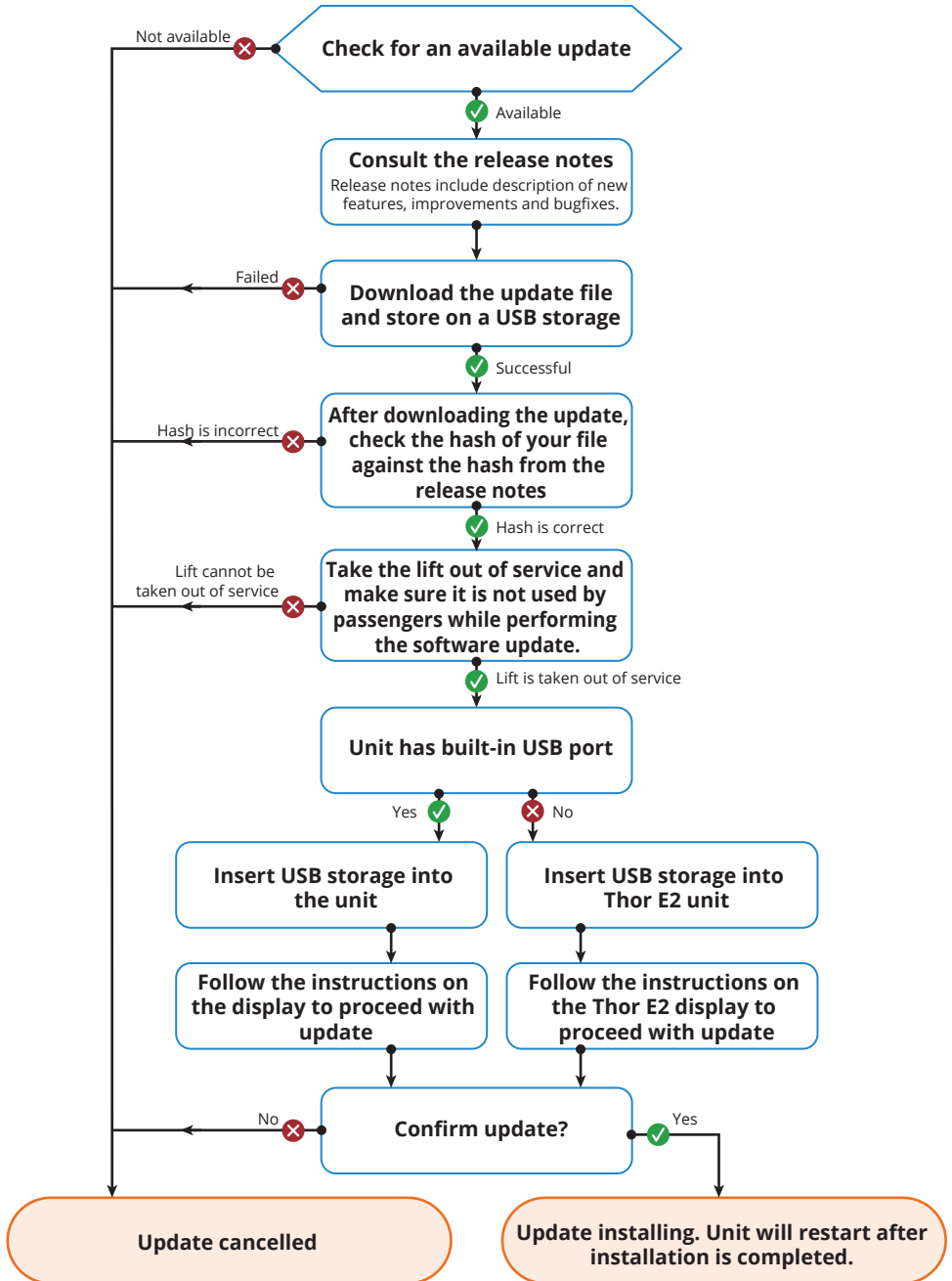
The below RACI diagram shows the responsibilities for handling incident reports within the Thor Parts AB organization as of the publishing of this manual.

	Lars Gustafsson	Tommy Nettelstad
R - Responsible C - Consulted I - Informed		
Customer contact (START)	I	R
Gathering details (CREATE)	R	C
Checking/Validating (TO DO)	R	C
Creating test case (IMPLEMENTATION)	R	
Fixing issue (IMPLEMENTATION)	R	
Testing solution (TEST/REVIEW)	R	
Update documentation (REVIEW)	R	C
Notify customer (RELEASE)	I	R

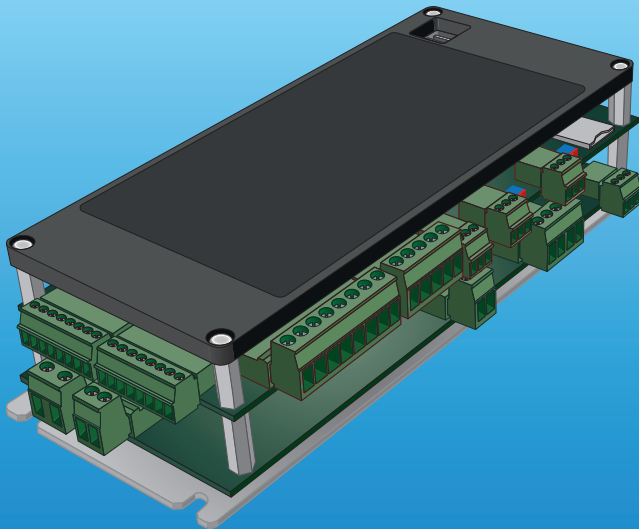
Incident report flow chart



Safely updating the device firmware



Contact us:



Thor Parts AB
Antennvägen 10
135 48 Tyresö
Sweden

Telephone: +46 (0)8-555 020 40
E-mail: sales@thor.parts

www.thor.parts